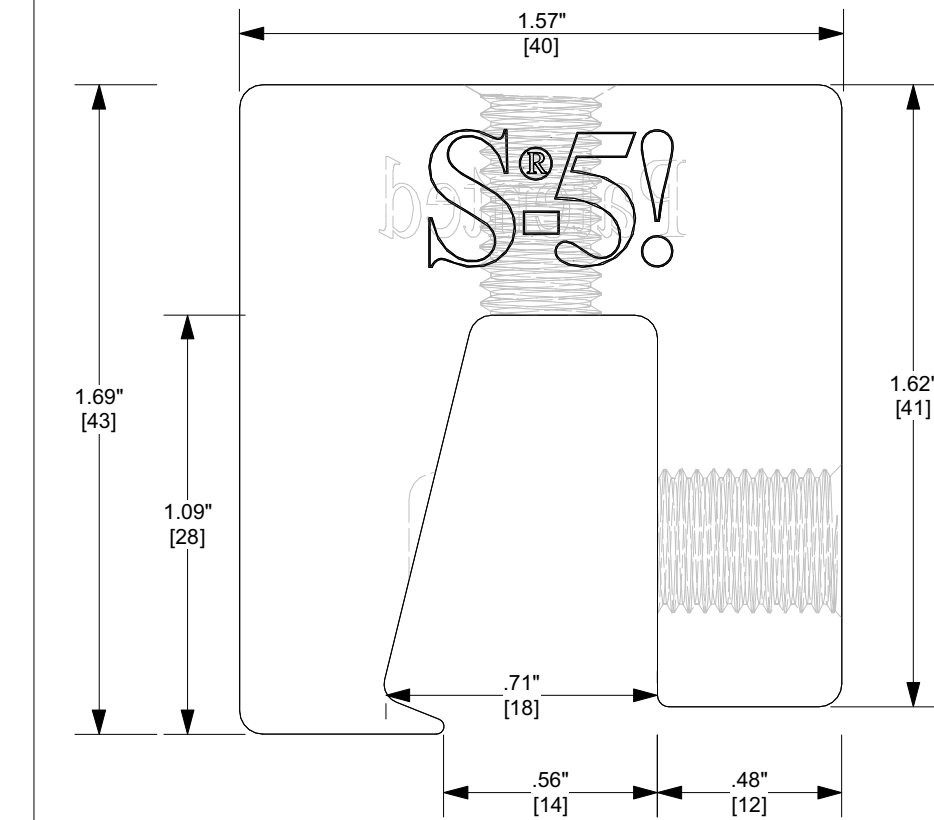
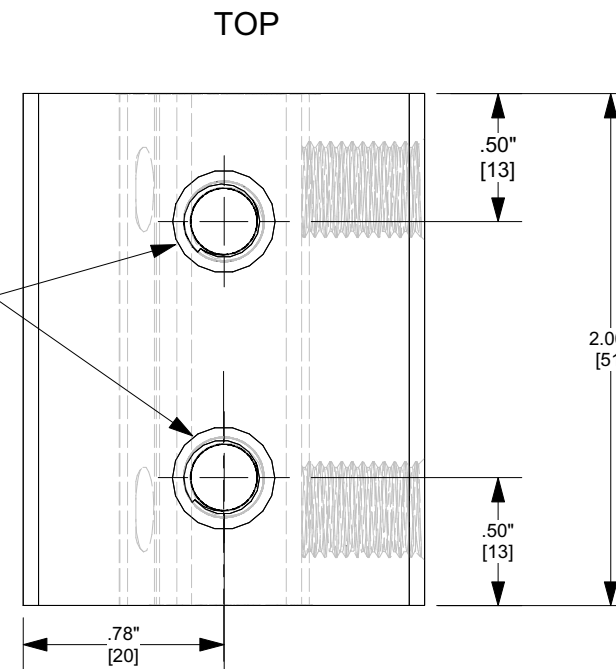
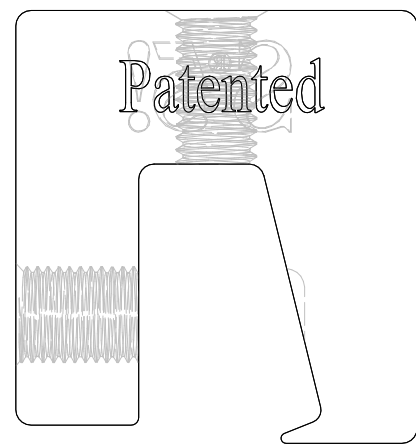


S-5-N

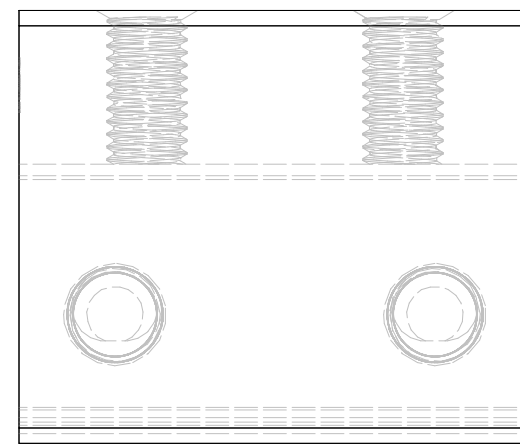
(2X) M8-1.25 THREADED HOLE



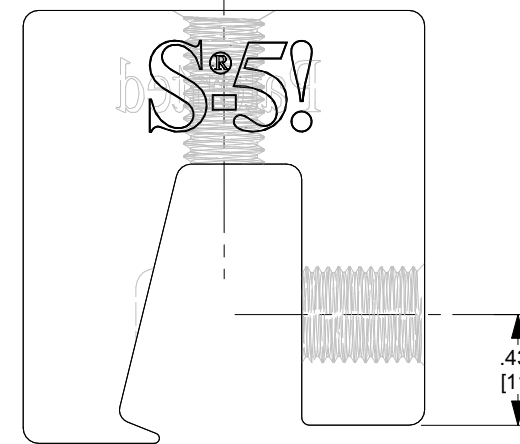
SCALE: 2X



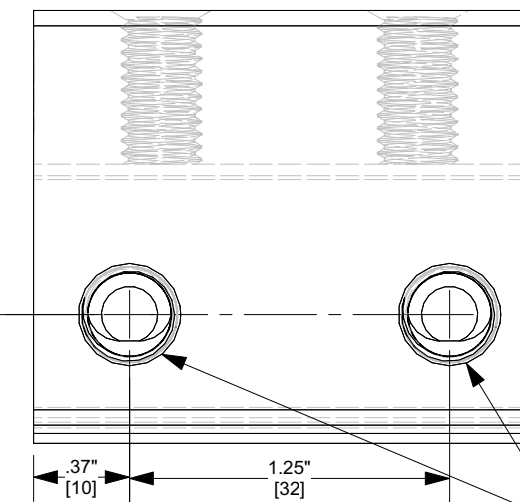
BACK



LEFT



FRONT

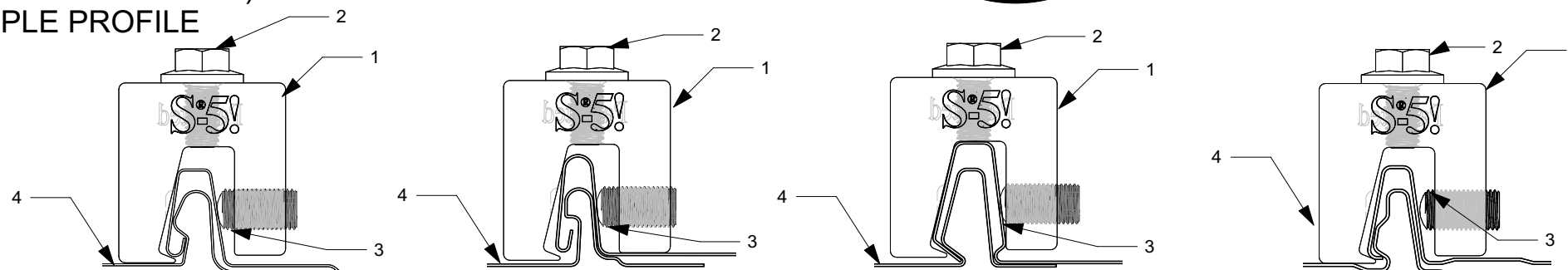
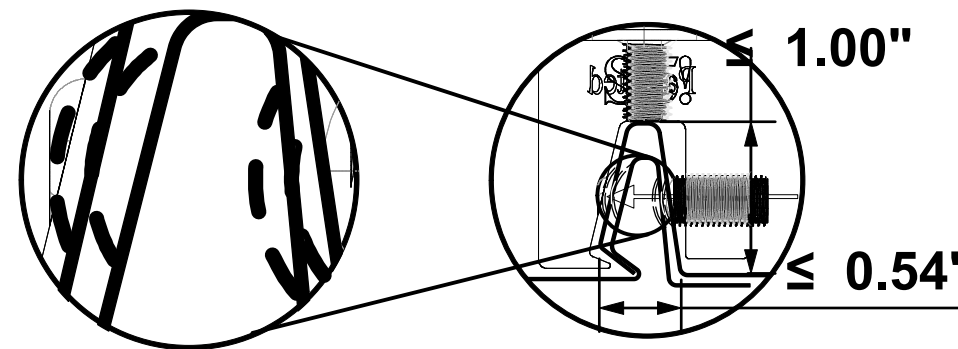


RIGHT

(2X) 3/8-24 THREADED HOLE

Notes

1. S-5-N
2. M8-1.25 X 16mm LENGTH 13mm HEX FLANGE BOLT
3. 3/8-24 X .8" ROUND POINT SETSCREW (NOT YET TENSIONED)
4. EXAMPLE PROFILE



FOR STANDING SEAM SPECIFIC MECHANICAL LOAD TEST INFORMATION AND CLAMP INSTALLATION INFORMATION PLEASE VISIT: WWW.S-5.COM

MATERIAL:	6061 T6
EST ASSEMBLY WEIGHT :	.43 LBS
SUPPLIED HARDWARE:	M8-1.25 X 16mm (13mm HEX) 18/8 SS 3/8-24 X .800" 18/8 SS
SCALE:	1:0.75
OTHER:	

 The Right Way!	METAL ROOF INNOVATIONS, LTD. 8655 TABLE BUTTE RD COLORADO SPRINGS, CO 80908 719-495-0518 719-495-0045 (FAX)	
	TITLE: S-5-N	
DRAWING NO. N72-A-0-A CCD	DRAWN BY DMMH	DATE 05/15/2012
S-5!® PRODUCTS ARE PROTECTED BY MULTIPLE U.S. PATENTS INCLUDING 5,228,248, 5,983,588 AND 6,164,033 (OTHERS ISSUED AND PENDING). EUROPEAN PATENTS ARE ALSO APPLIED FOR AND PENDING UNDER THE PATENT COOPERATION TREATY WITH DIVISIONAL FILING RIGHTS RETAINED. METAL ROOF INNOVATIONS, LTD. (LICENSOR OF S-5!® TECHNOLOGY) AGGRESSIVELY PROSECUTES PATENT INFRINGEMENT.		