





HotValley creates wide melt path for snow melt water to prevent ice dam formations. It is recommended that HotValley be used in combination with any HotEdge roof edge ice melt system since it is always critical that snow melt water created by HotValley is not able to re-freeze on roof edges where icicles and ice dams could form. HotValley is composed of a three sided metal track designed to encapsulate one or two runs of commercial-grade 12W self-regulating UL-approved deicing heat cable. It is designed for fast, simple installation in all roof valleys. The HotValley is attached to the valley with high quality commercial grade polyurethane adhesive, avoiding penetrations to the roof deck. Thermal energy is conducted directly from the heat cable to the HotValley track, and radiates outward from the track, resulting in a wide melt path sufficient to prevent pooling and allow snowmelt to reach the heated roof eave.

EXCLUSIVE FEATURES

SECURE: An engineered channel was developed to receive existing composite asphalt shingles

SIMPLE & FAST INSTALLATION: Simple design installs easily on all EXISTING asphalt composite shingle roofs

NEC Compliant: The engineered open raceway design conforms to the NEC (National Electrical Code) Article 426 and provides access for insertion, inspection and replacement

NO MODIFICATIONS: This one piece design requires no shingle cutting or removal. Avoids damaging or modifying existing roof shingles which saves time on installations to reduce overall cost of project

LESS HEAT TRACE CABLE NEEDED: The benefit of a direct heat transfer is less heat trace cable is needed to prevent ice dam and icicles formations on all roof edges

A "GREEN" SOLUTION: Less heat trace cable means lower energy costs. In fact, all HotEdge roof edge melt systems use at least 50% less heat trace cable than all other alternatives, i.e. zig zag and aluminum metal tracks

WARRANTY: Industry leading 10-year limited warranty against heat cable failures and manufacture defects assures a long service. Heat trace cable is protected from UV light and snow/ice shifts and slides

COLOR MATCH: Our expansive inventory and nationwide network allows HotEdge to best match existing roof or trim color



SPECIFICATIONS

MATERIAL SELECTION:

.021" Copper, 24 gauge Kynar 500 Steel or .032 Aluminum Kynar 500

COLOR:

Our expansive inventory and nationwide network allows HotEdge to best match existing roof or trim color

DIMENSIONS:

5' lengths and commercial grade adhesive included

HEATING SYSTEM:

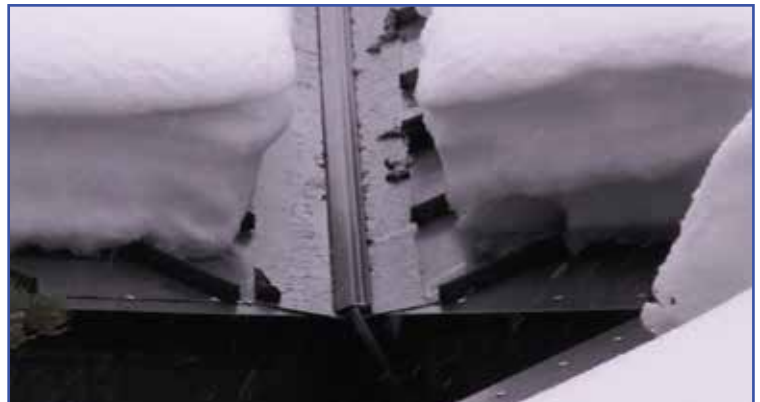
Commercial-grade 12W self-regulating UL-approved for roof and gutter deicing heat cable

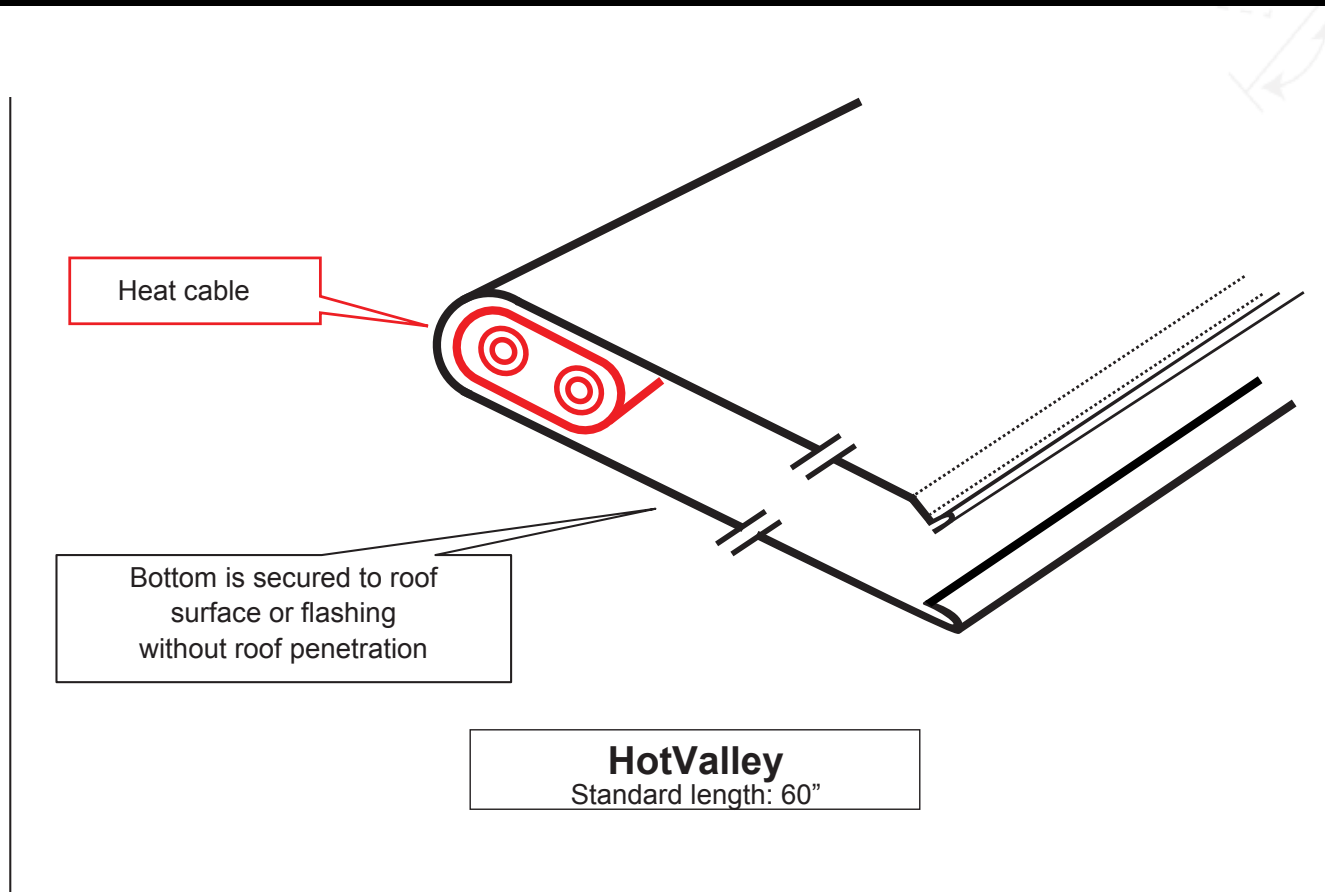
ELECTRICAL REQUIREMENTS:

120VAC, or 208-277VAC. NEC Article 426.28 requires 30mA ground fault circuit protection for roof ice melting systems

COMPONENTS:

HotValley, commercial-grade 12W self-regulating UL-approved for roof and gutter deicing heat cable, commercial grade adhesive





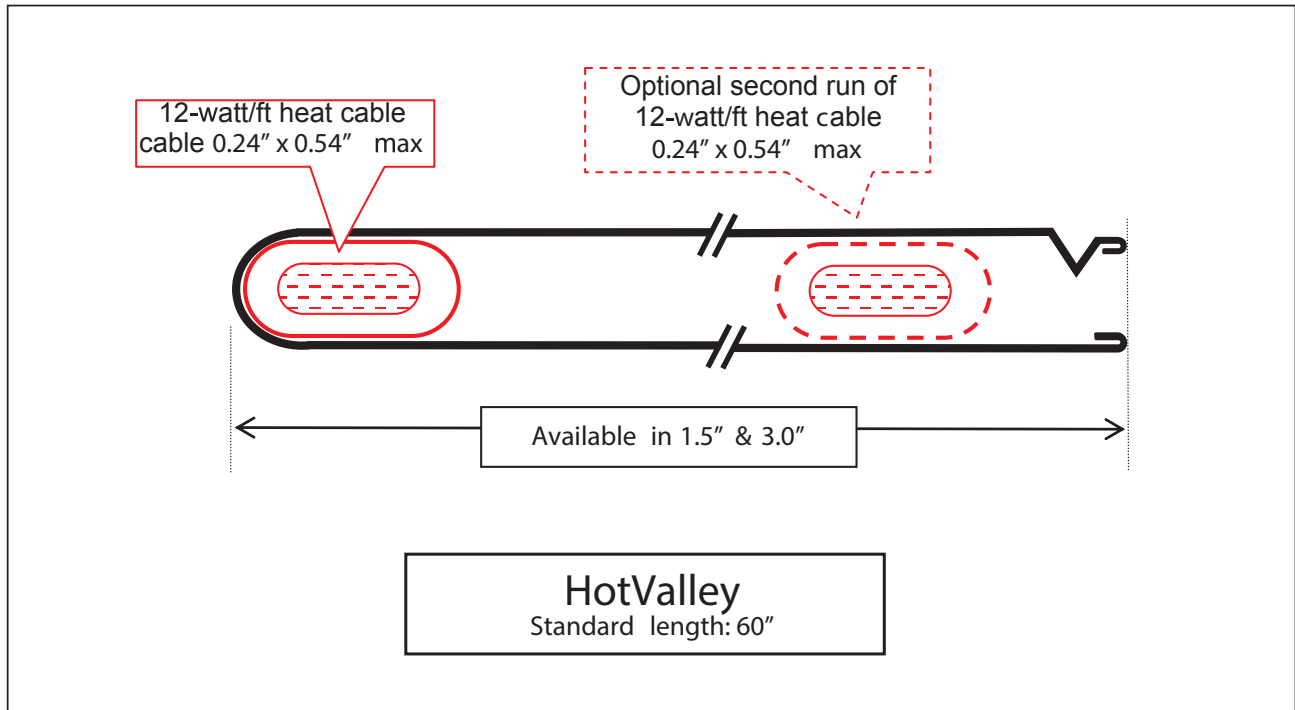
HotValley – Part of the HotEdge Roof Ice Melt System

The HotValley track holds a single or double run of UL Listed self-regulating heat cable. It spreads the heat across a 1.5” or 3” wide panel. Compared to a single run of exposed heat cable, the HotValley track creates a much wider heated drain path that prevents ice melt water from refreezing until it can be drained away from the structure’s foundation.

HotValley can be used in the valley between roofs or beneath drip lines of dormers. The track hides and protects the heat cable and is available in a number of different colors to match architectural style. This presents a clean and attractive street view.

Access through the open slot provides for insertion, inspection and replacement of the cable in compliance with the NEC (National Electrical Code) requirements.

HotValley Panel Profile



HotValley Options

The HotValley track is available in 1.5" and 3" widths. Other widths are available to accommodate smaller or larger valleys. A double run of cable can be used in the 3" wide version. The track is designed to accommodate a 12-watt UL Listed heat cable.

Commercial grade adhesive, available from the factory, is used to secure HotValley to most roof surfaces.

HotValley™ Harmonized Part Number Nomenclature

HVAR 003 — S - HAGR — 060 — XX — REV4

<i>HotValley Products</i>	<i>Material & Color</i>	<i>Length</i>	<i>Options</i>
<p>HVAR 015 = HotValley 1.5" Wide HVAR 003 = HotValley 3" Wide</p> <p>(Note: The HotValley Track will hold 12-watt UL Listed heat cable)</p>	<p>Material C = Copper, 0.021", 16oz., ½ hard S = Painted Kynar 500 Steel 0.019"</p> <p>A = Painted Kynar 500 Aluminum, 0.032"</p> <p>Color NATC = Natural Copper (For Copper Material)</p> <p>Standard Colors ALMD= Almond CLRD = Colonial Red HMGR = Hemlock Green SLBL = Slate Blue BNWH = Bone White COPE = Copper Penny MNBN = Mansard Brown SLGR = Slate Gray MABL = Matte Black DKBZ = Dark Bronze MDBZ = Medium Bronze CLGR = Classic Green HAGR = Hartford Green SRTN = Sierra Tan</p>	<p>060 = 60"</p>	<p>XX = No options</p> <p>BTP = Build to print (Special Order Only)</p>